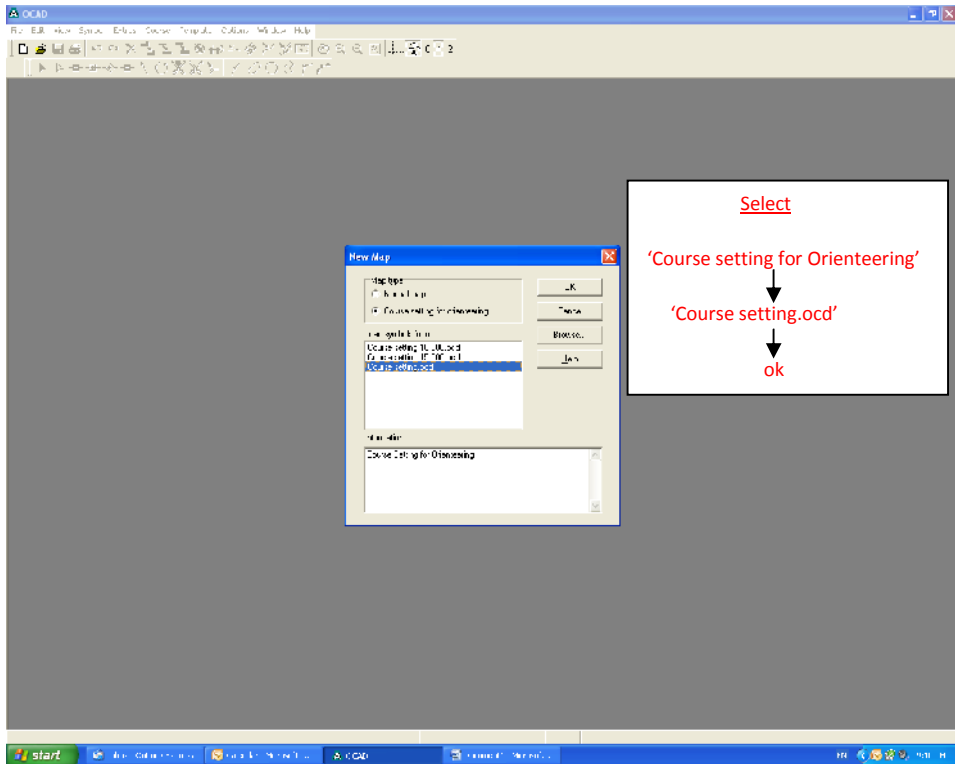
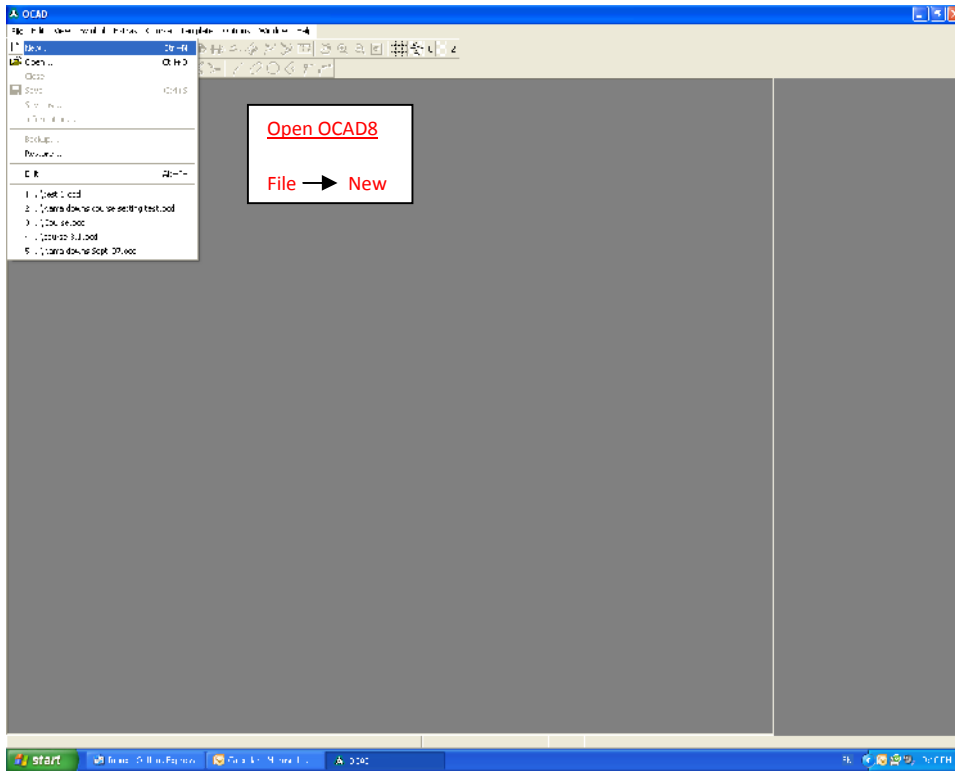
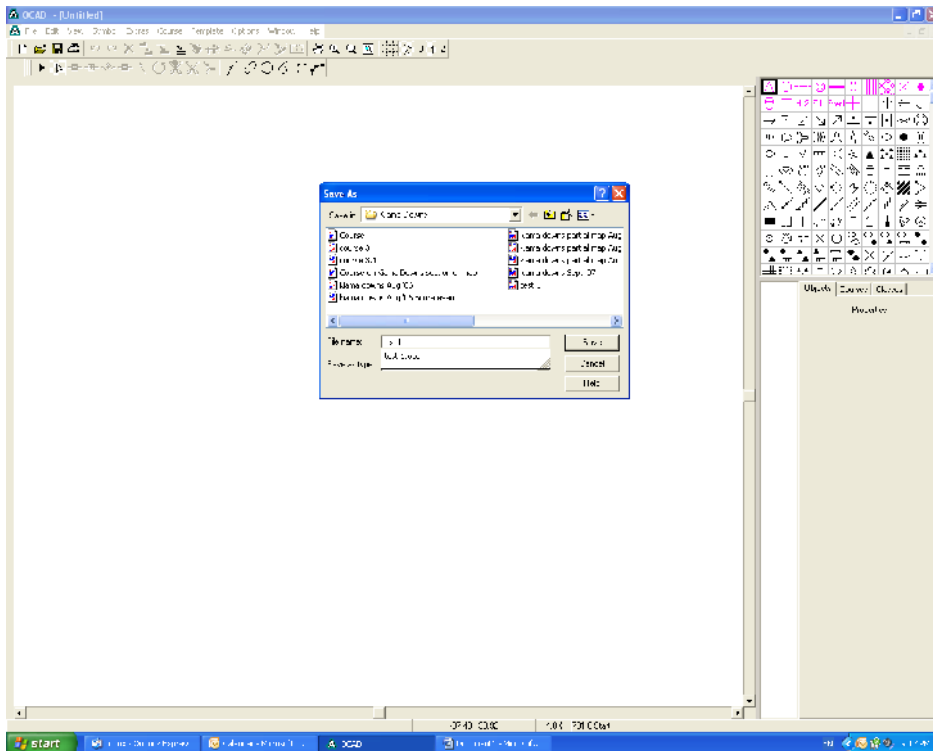
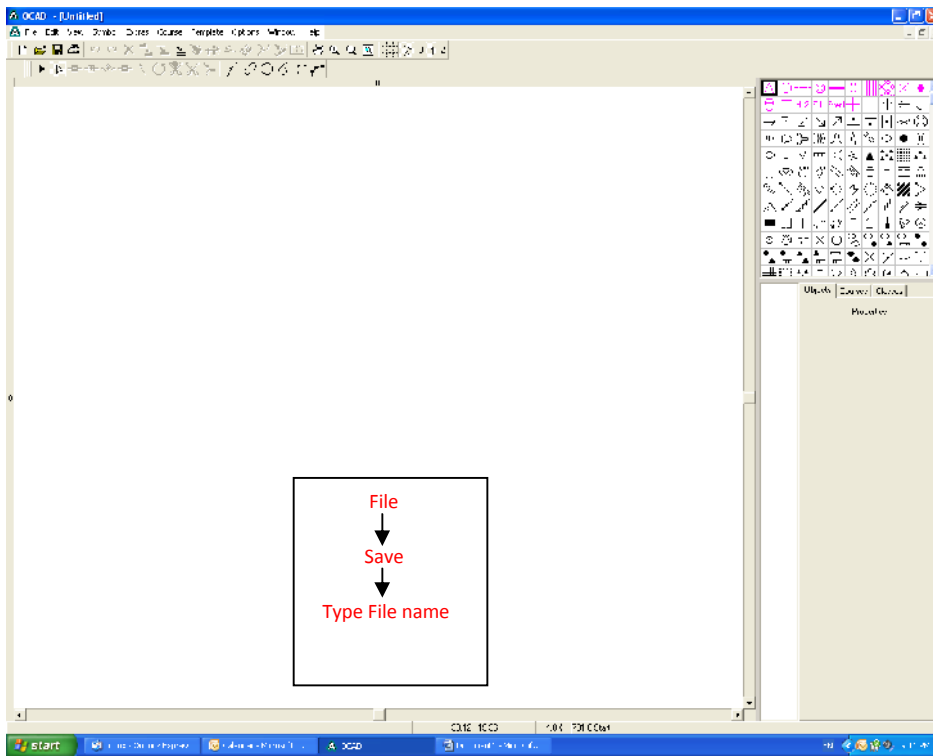
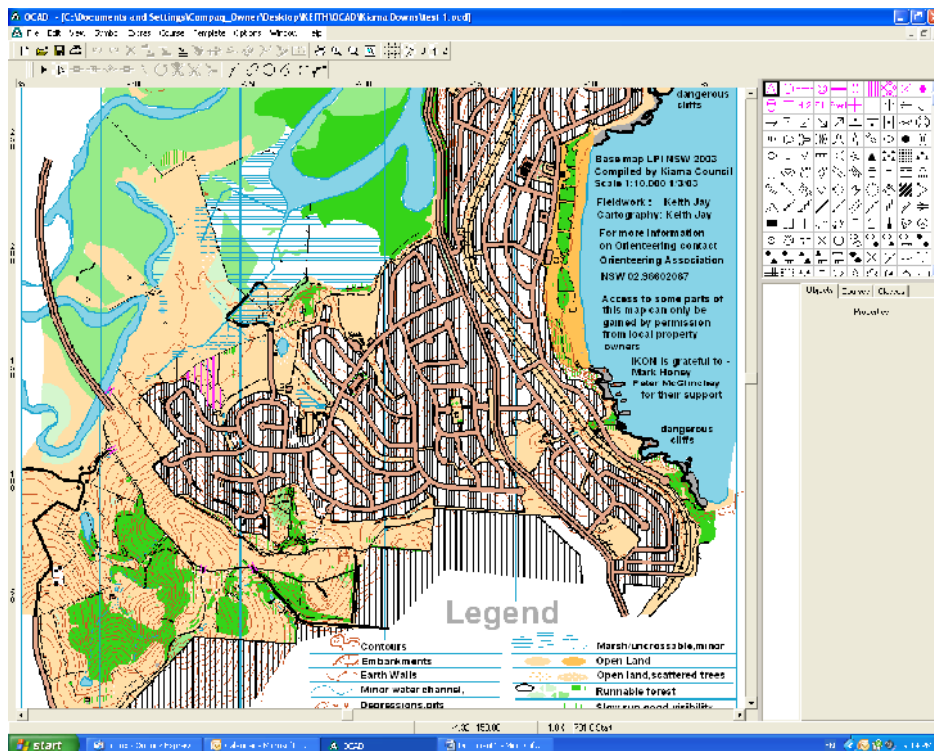
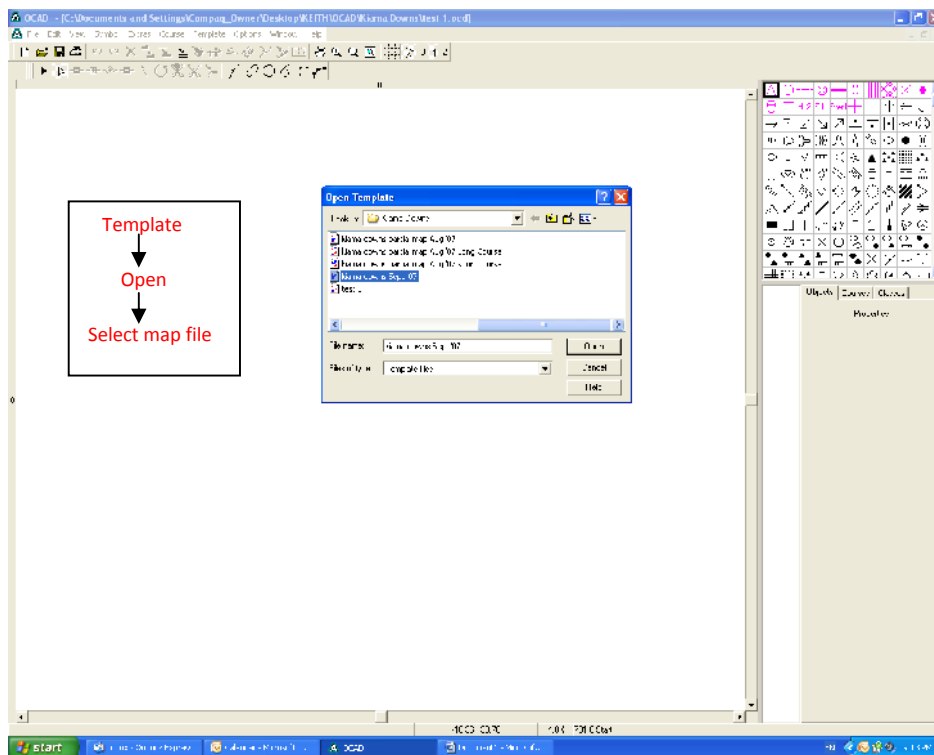


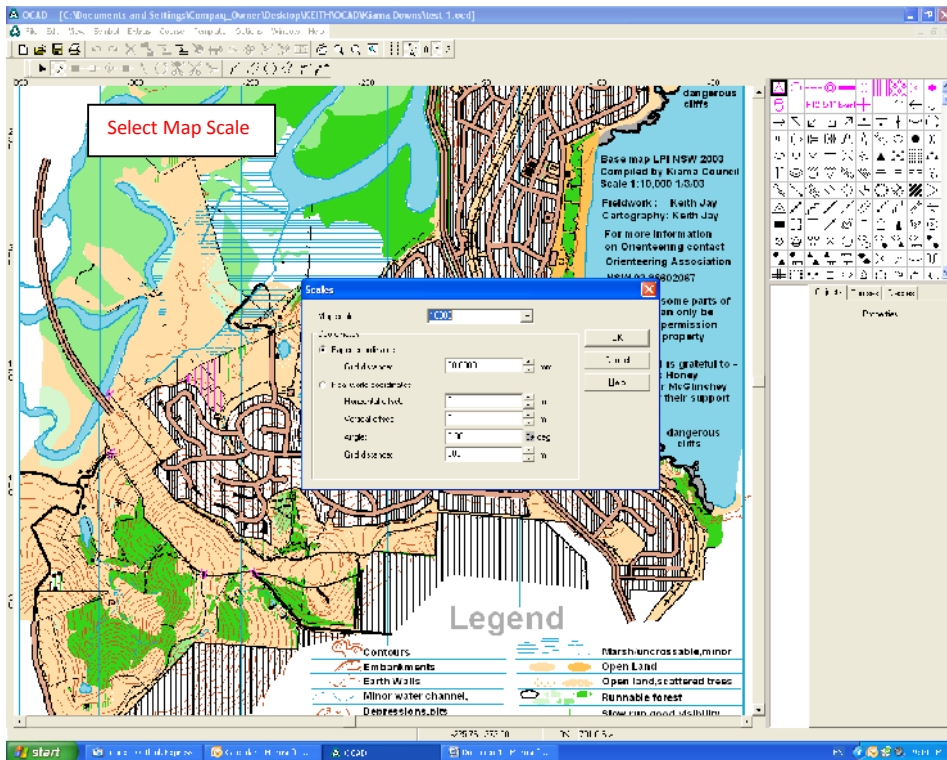
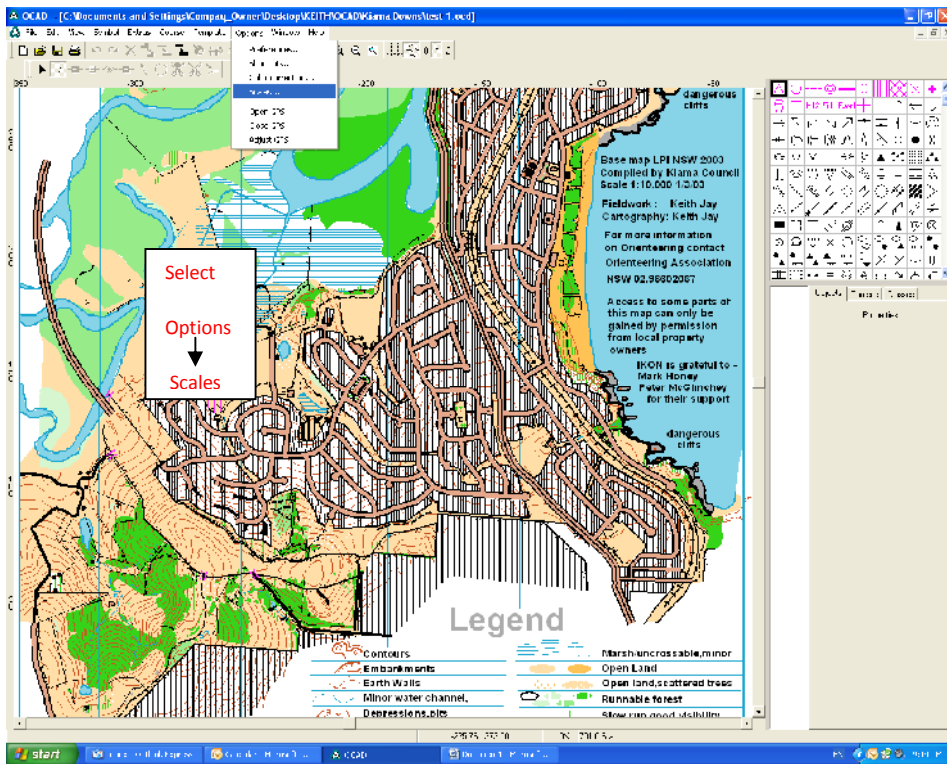
Course Setting Instructions for OCAD8

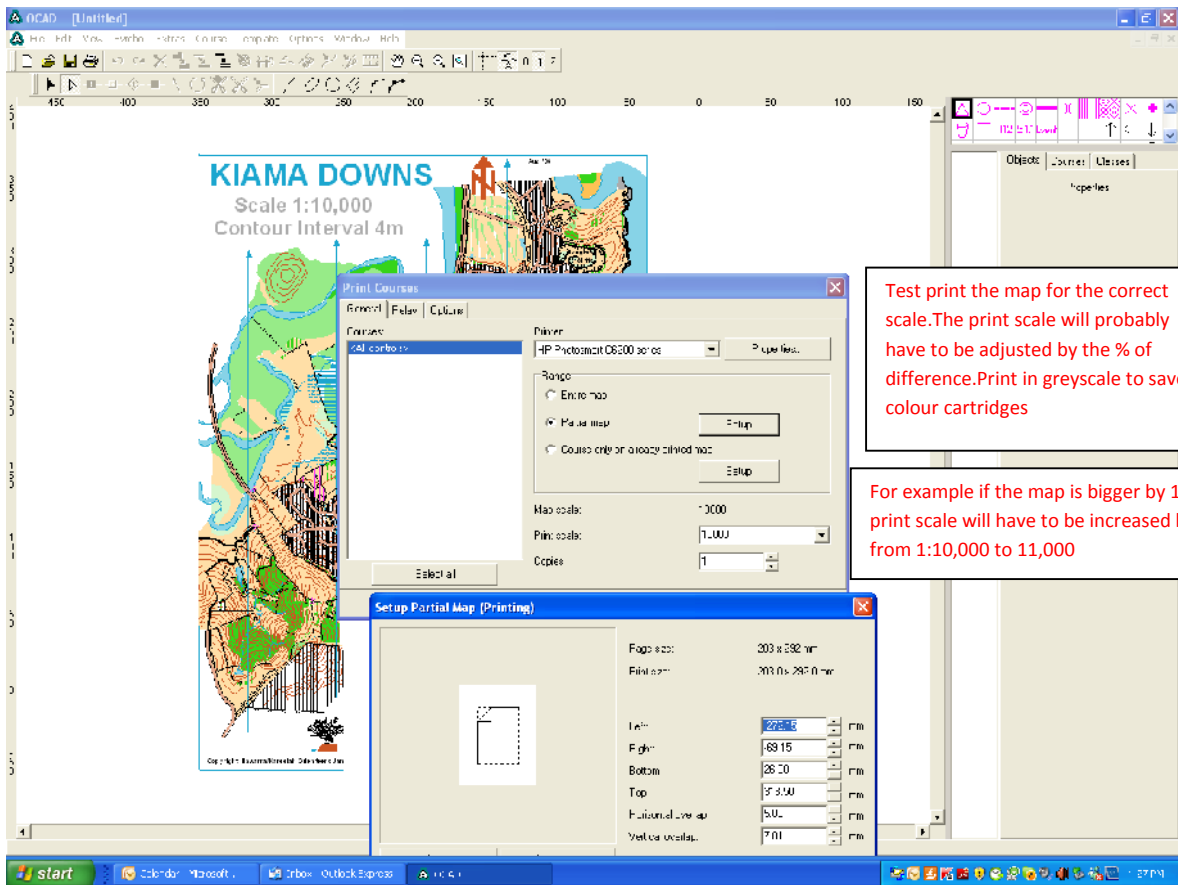
Keith Jay





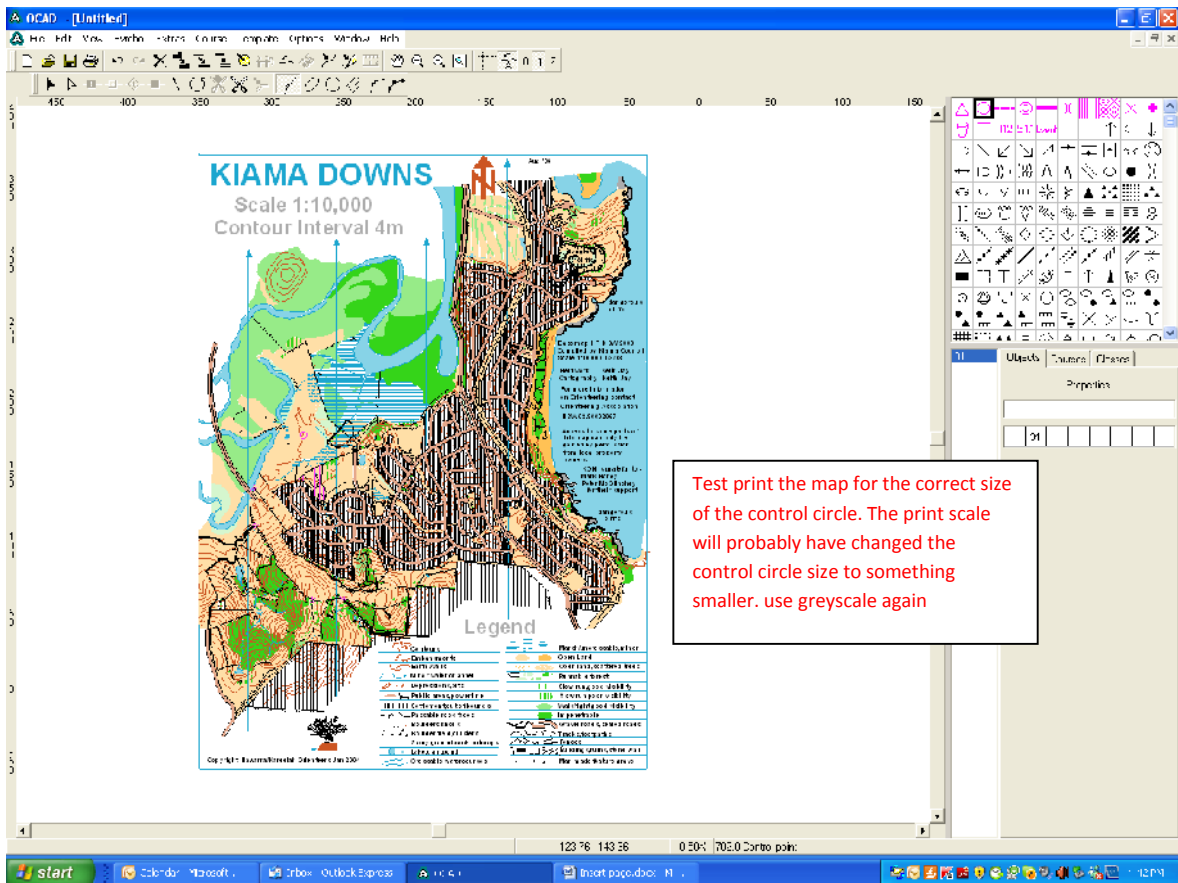




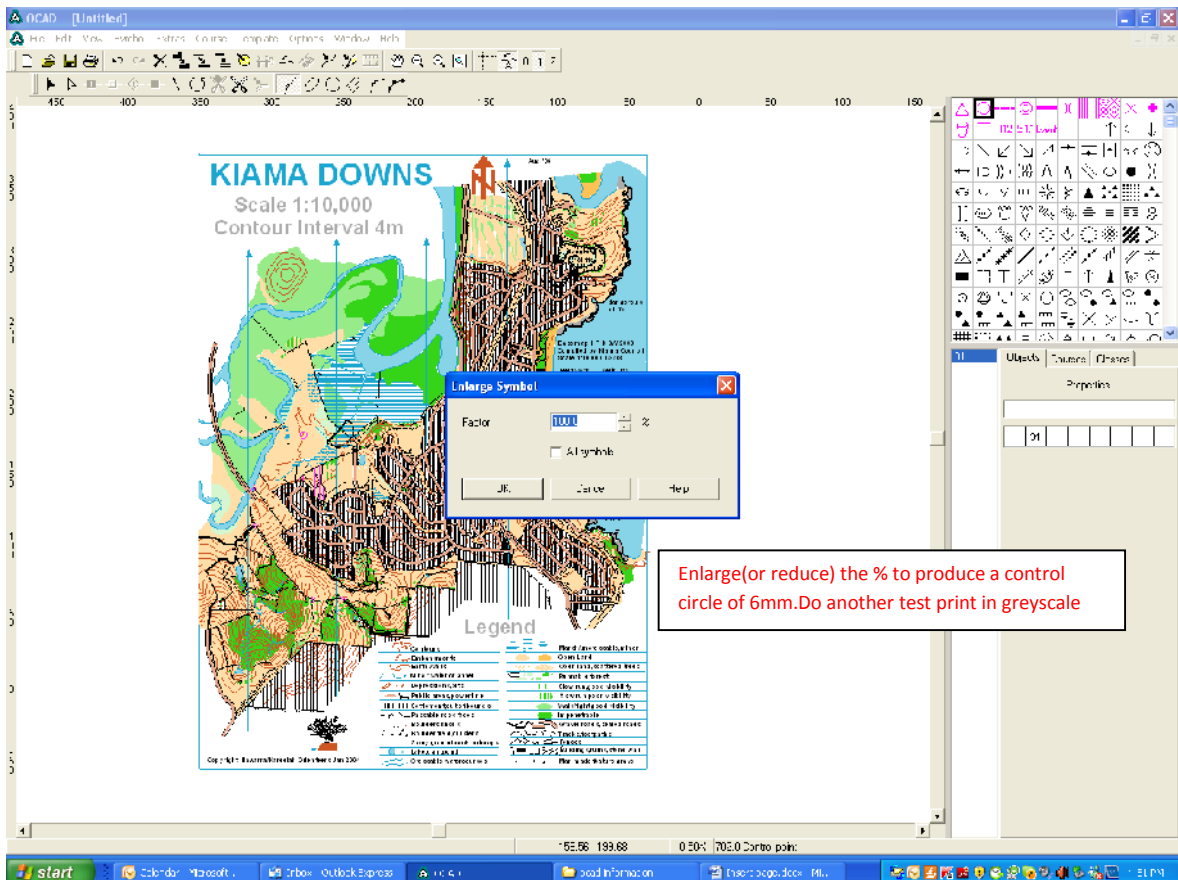
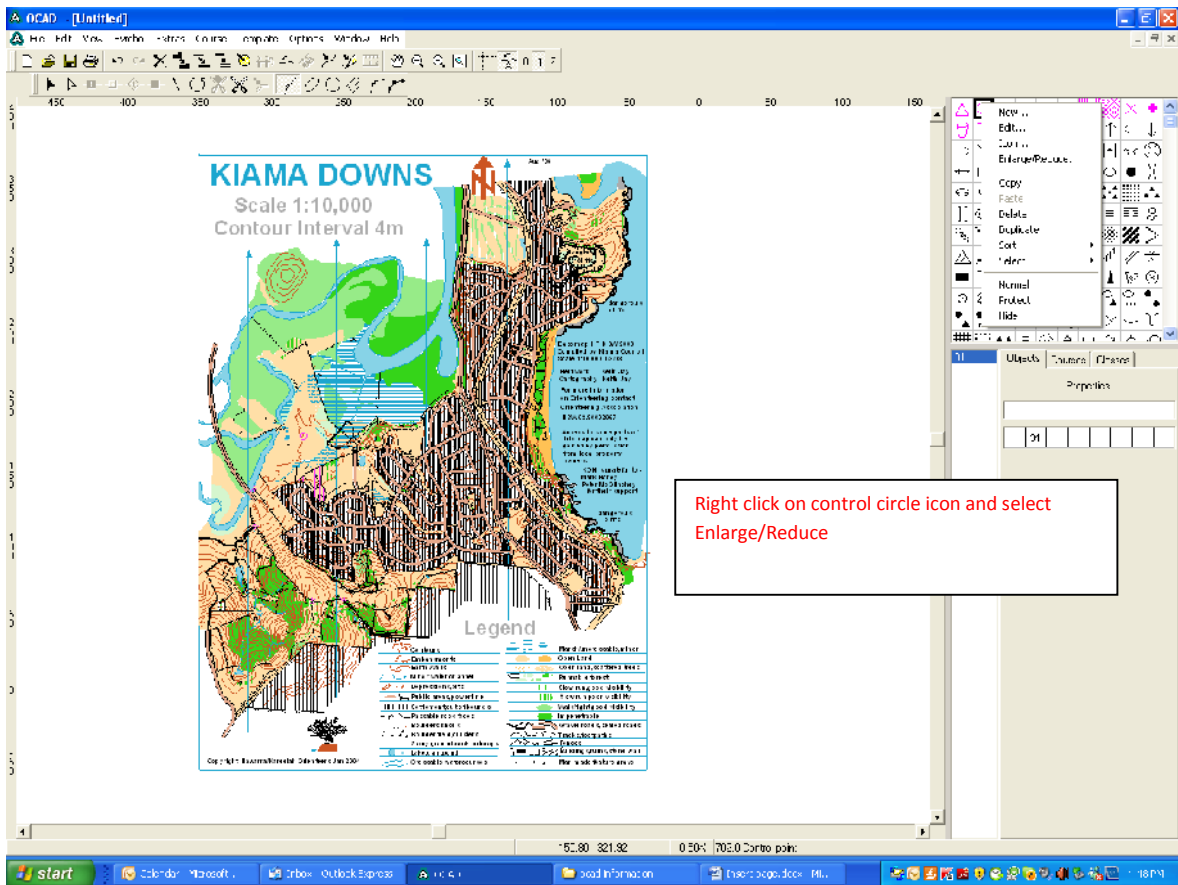


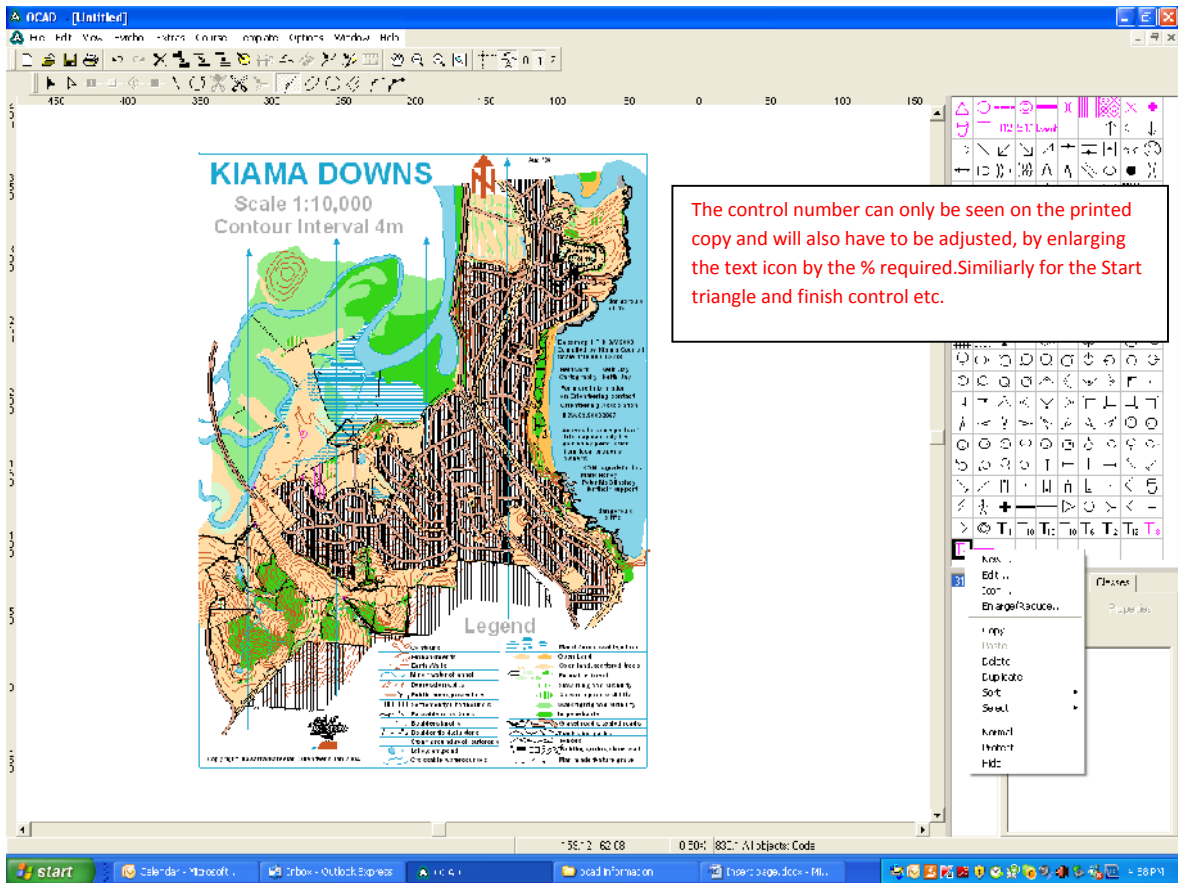
Test print the map for the correct scale. The print scale will probably have to be adjusted by the % of difference. Print in greyscale to save colour cartridges

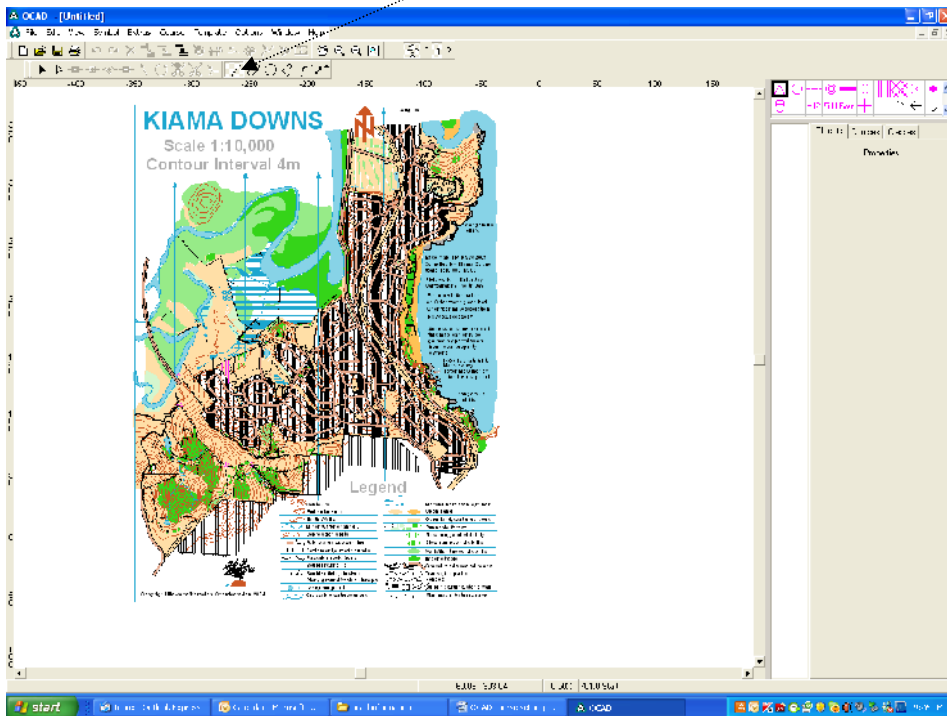
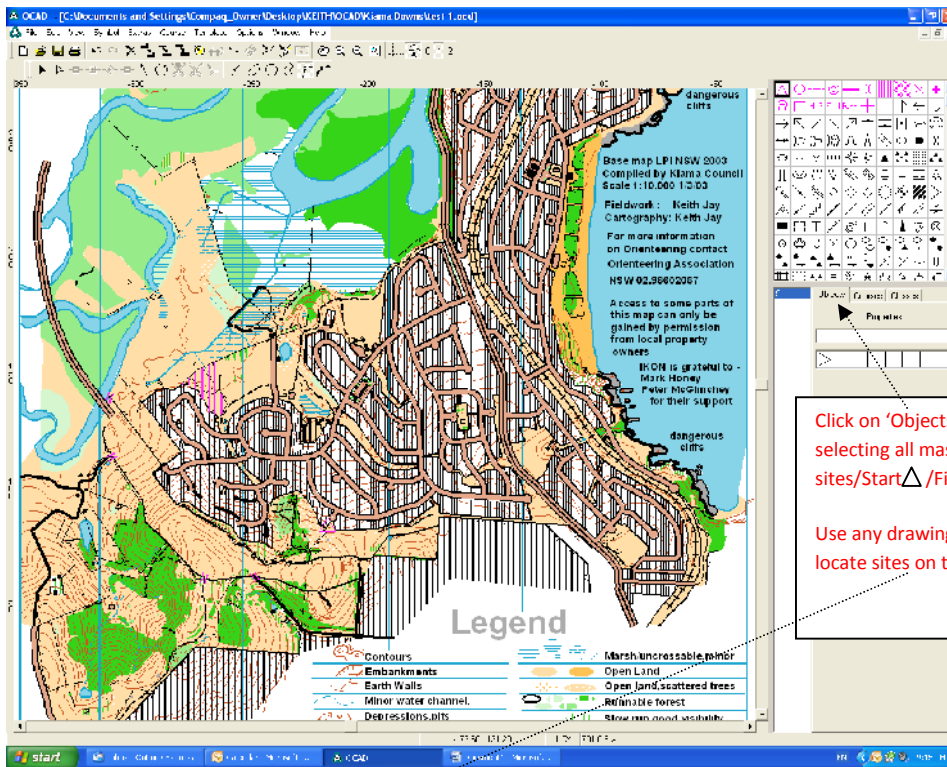
For example if the map is bigger by 10% the print scale will have to be increased by 10% from 1:10,000 to 11,000

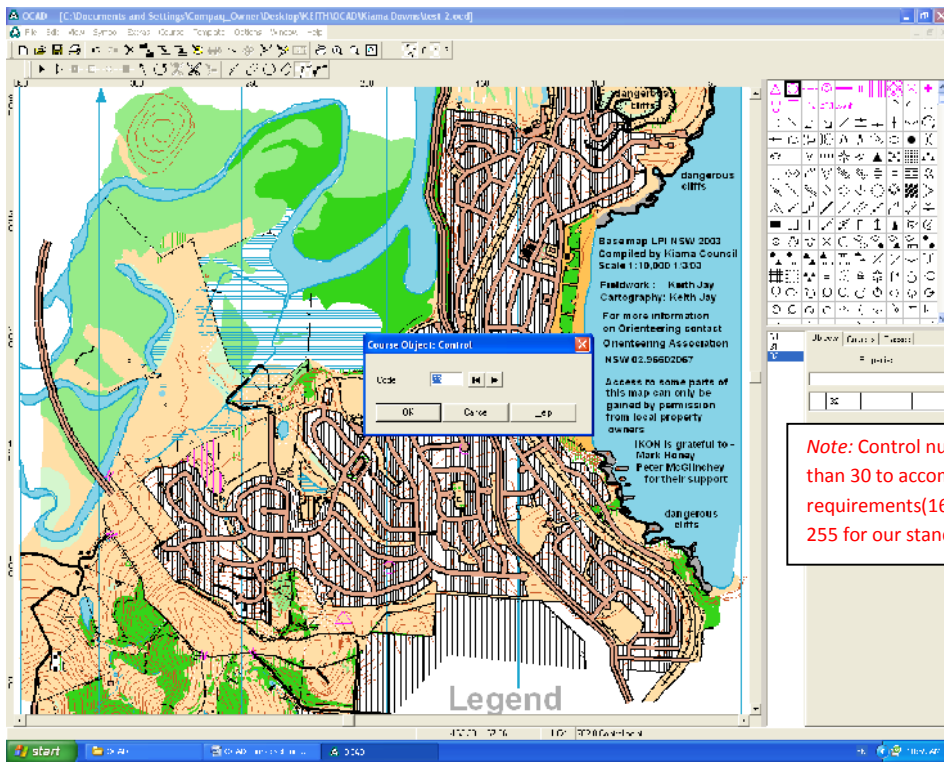


Test print the map for the correct size of the control circle. The print scale will probably have changed the control circle size to something smaller. Use greyscale again

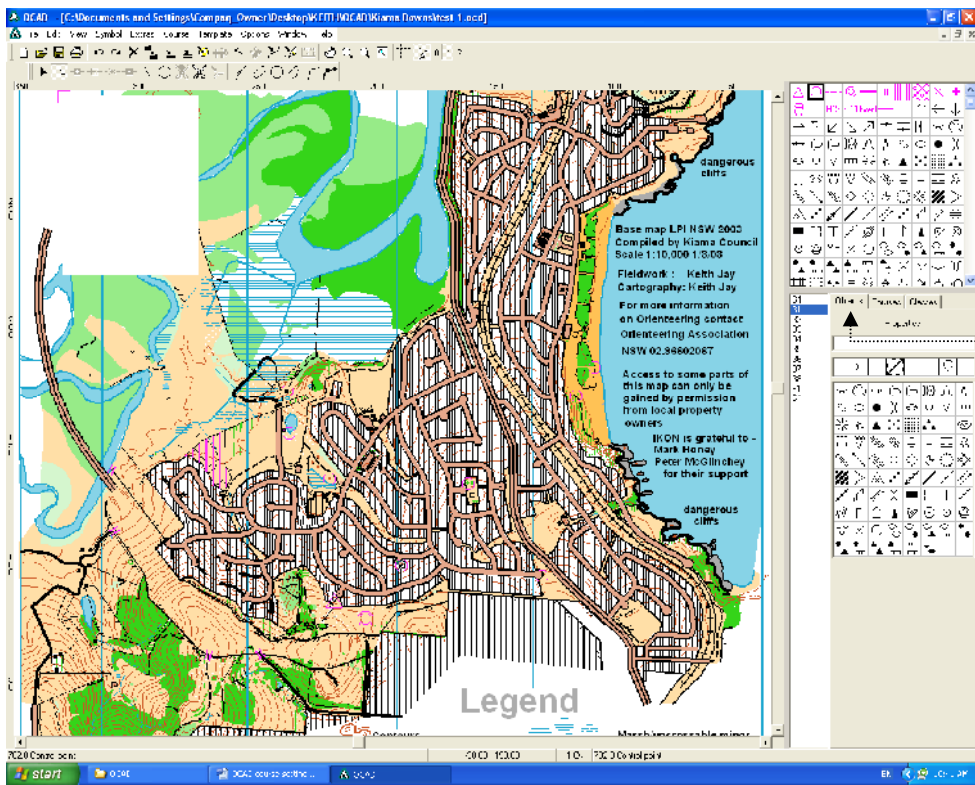








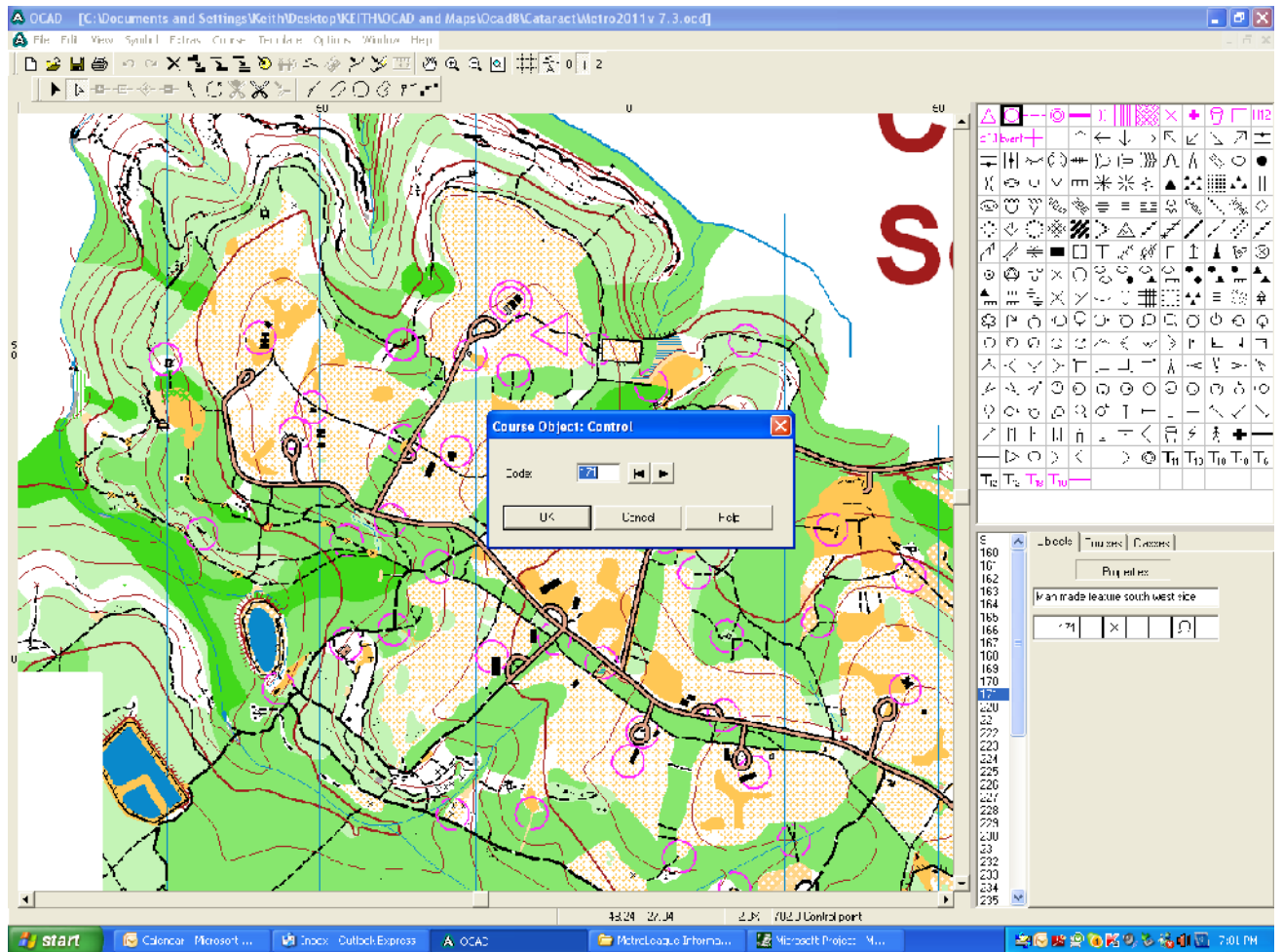
Note: Control numbers are greater than 30 to accommodate SI requirements (160 -179 and 200 – 255 for our stands. Total 75)

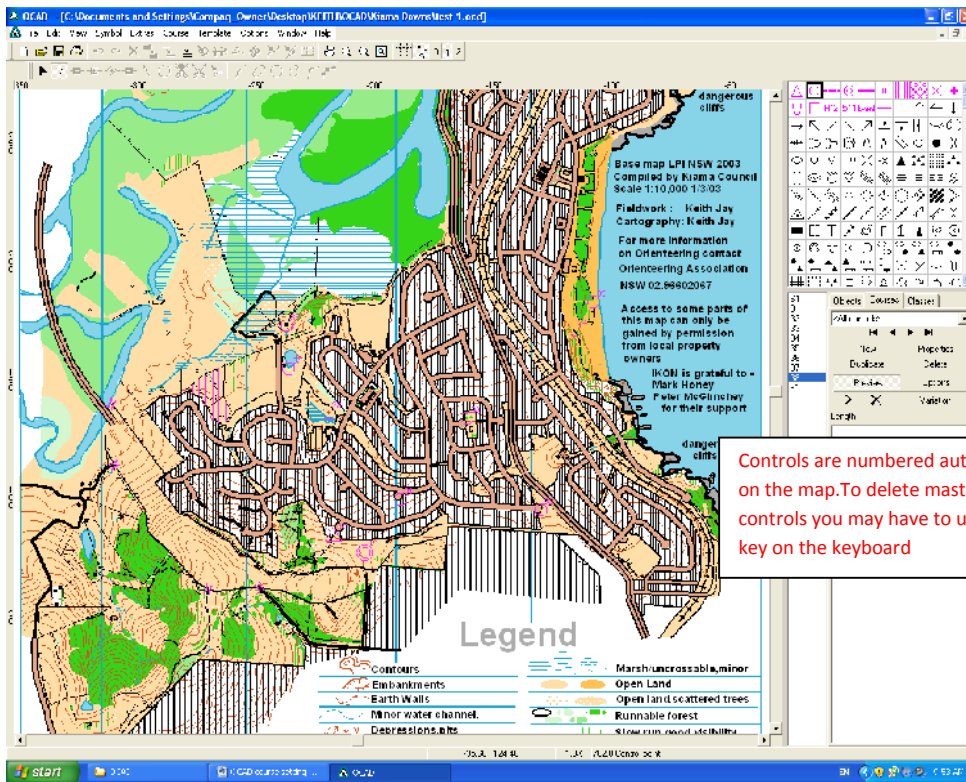


For control descriptions ,click on Objects and select individual control numbers

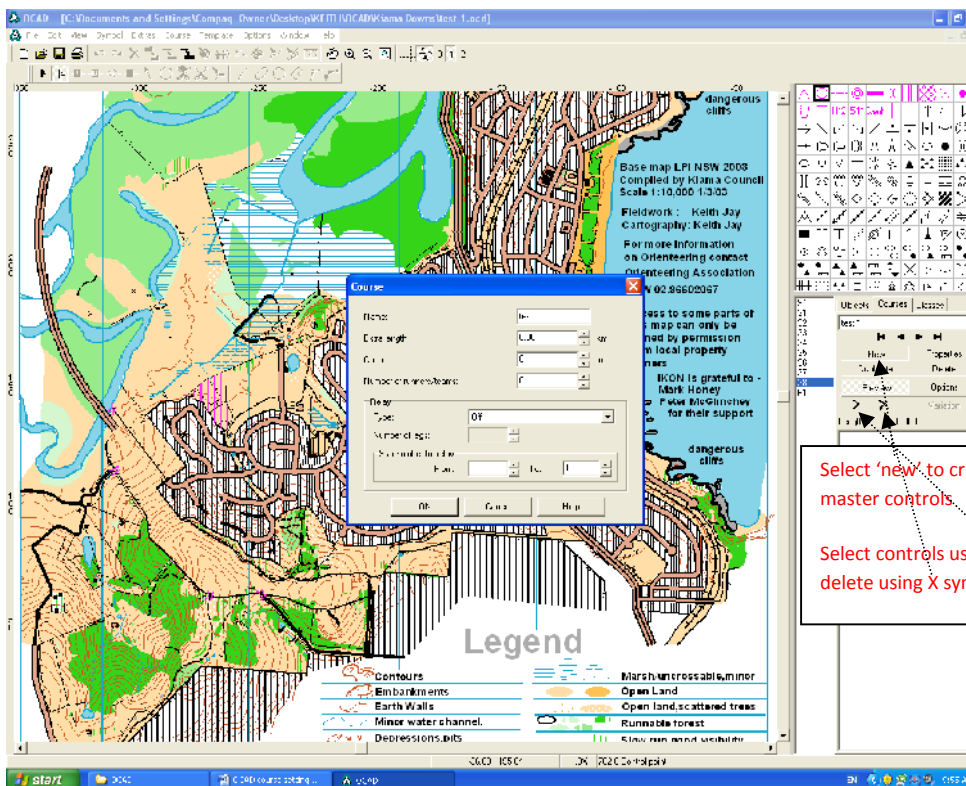
Drop down selection appears when you click on description boxes

To change a control number. In objects select the control number to be changed and click on properties and retype the number

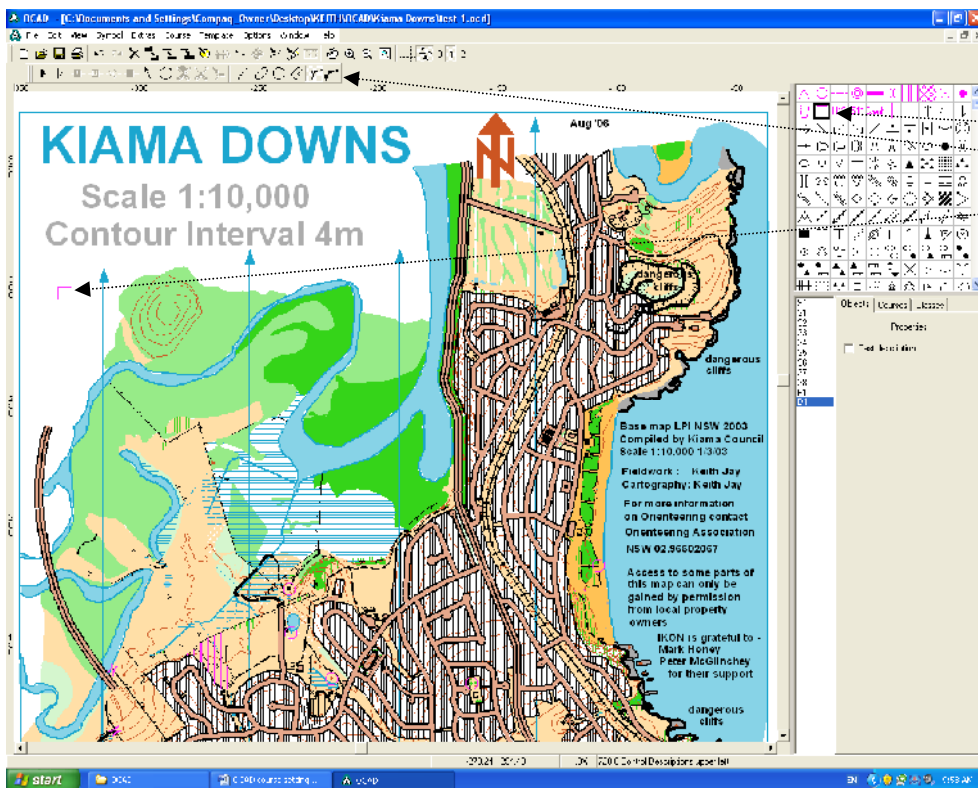
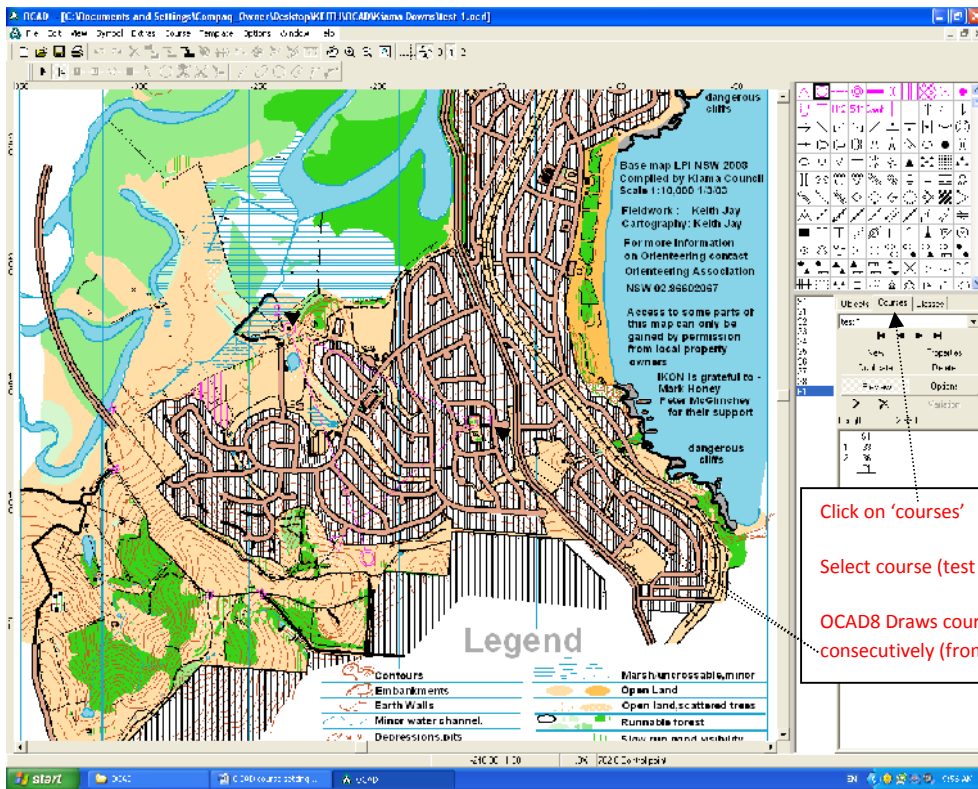


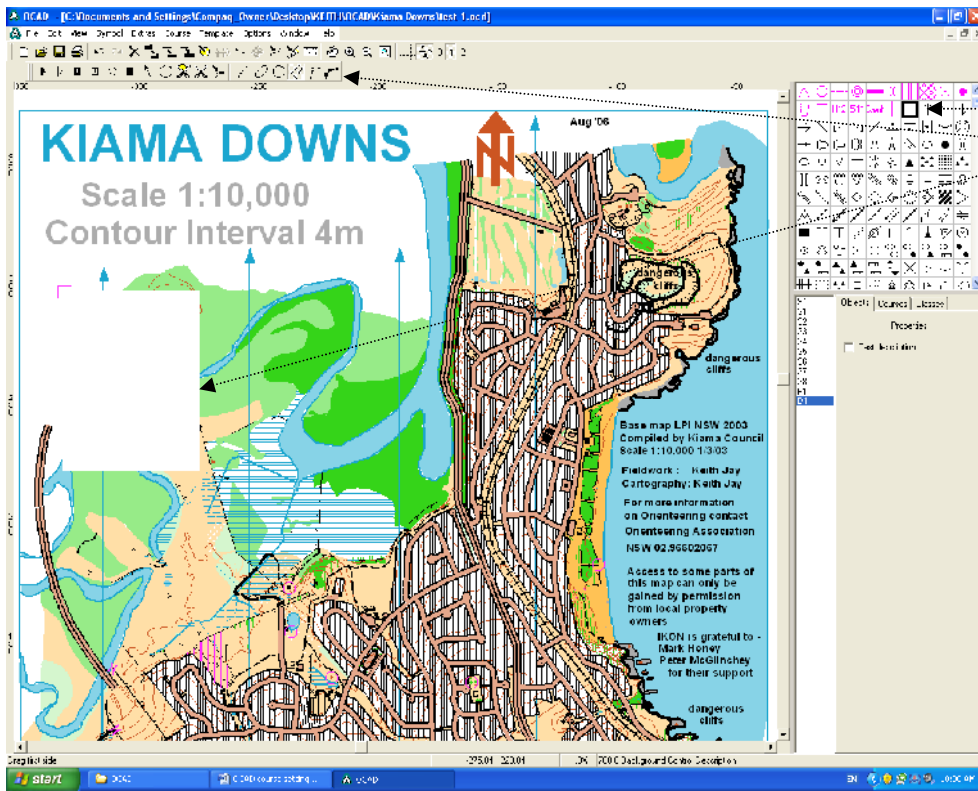


Controls are numbered automatically on the map. To delete master controls you may have to use delete key on the keyboard

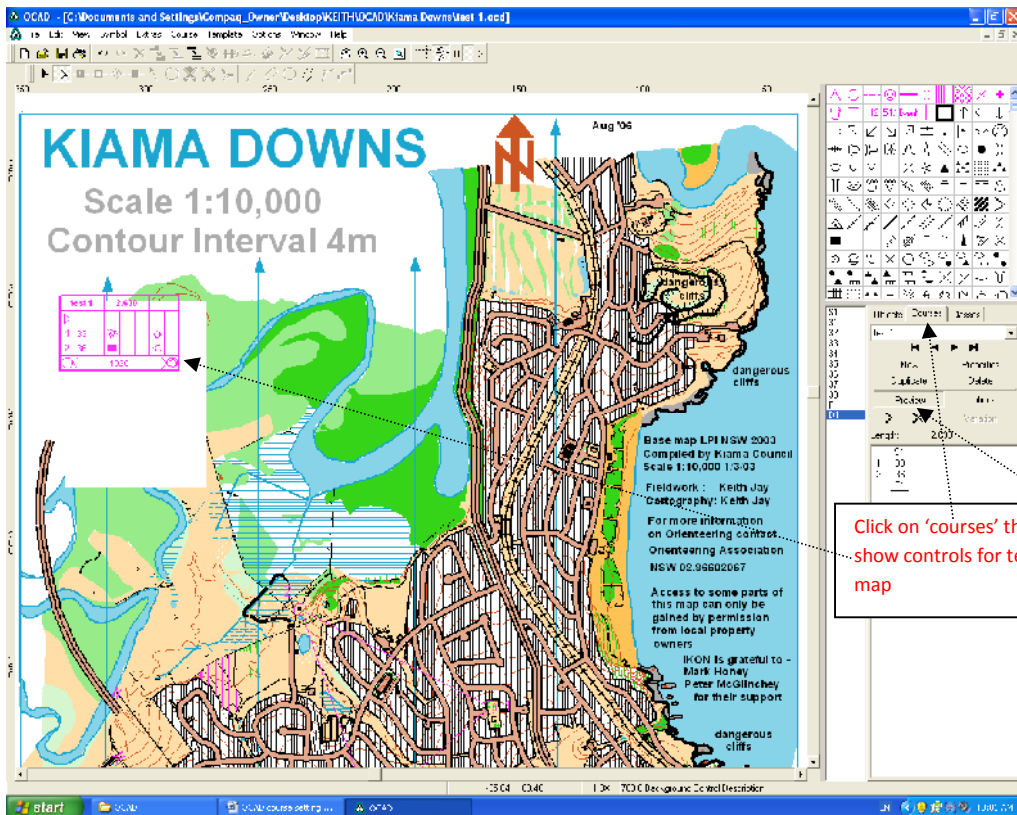


Select 'new' to create courses from master controls.
Select controls using > symbol and delete using X symbol

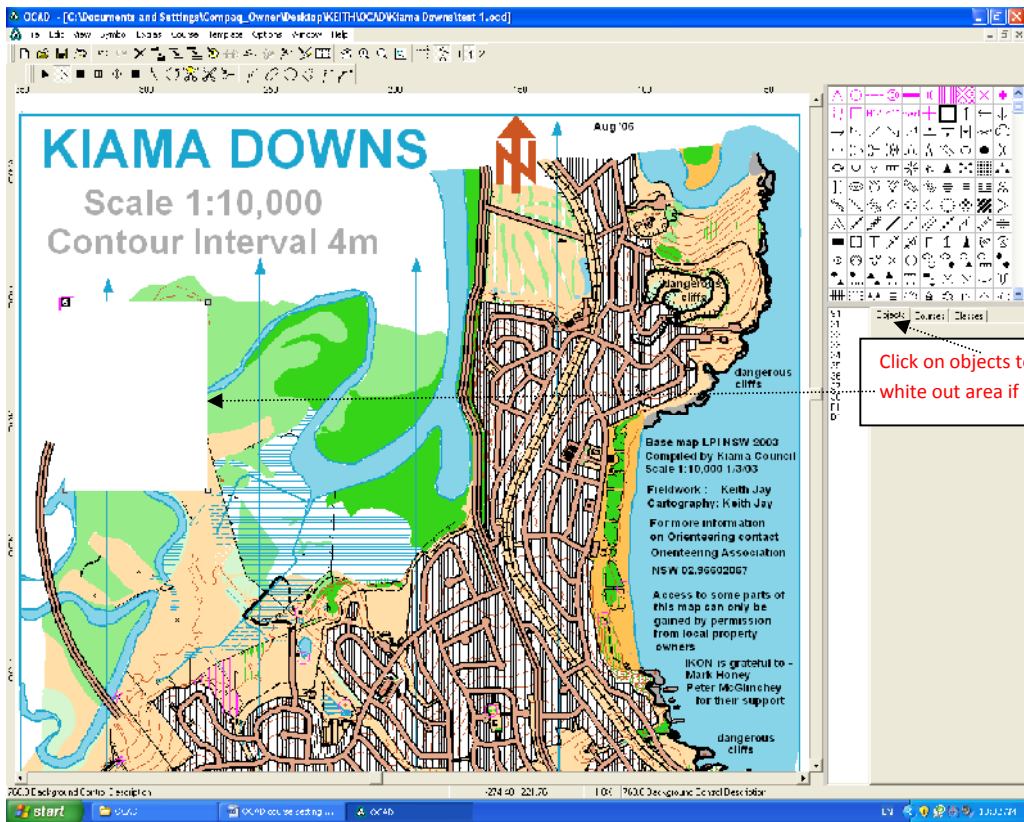


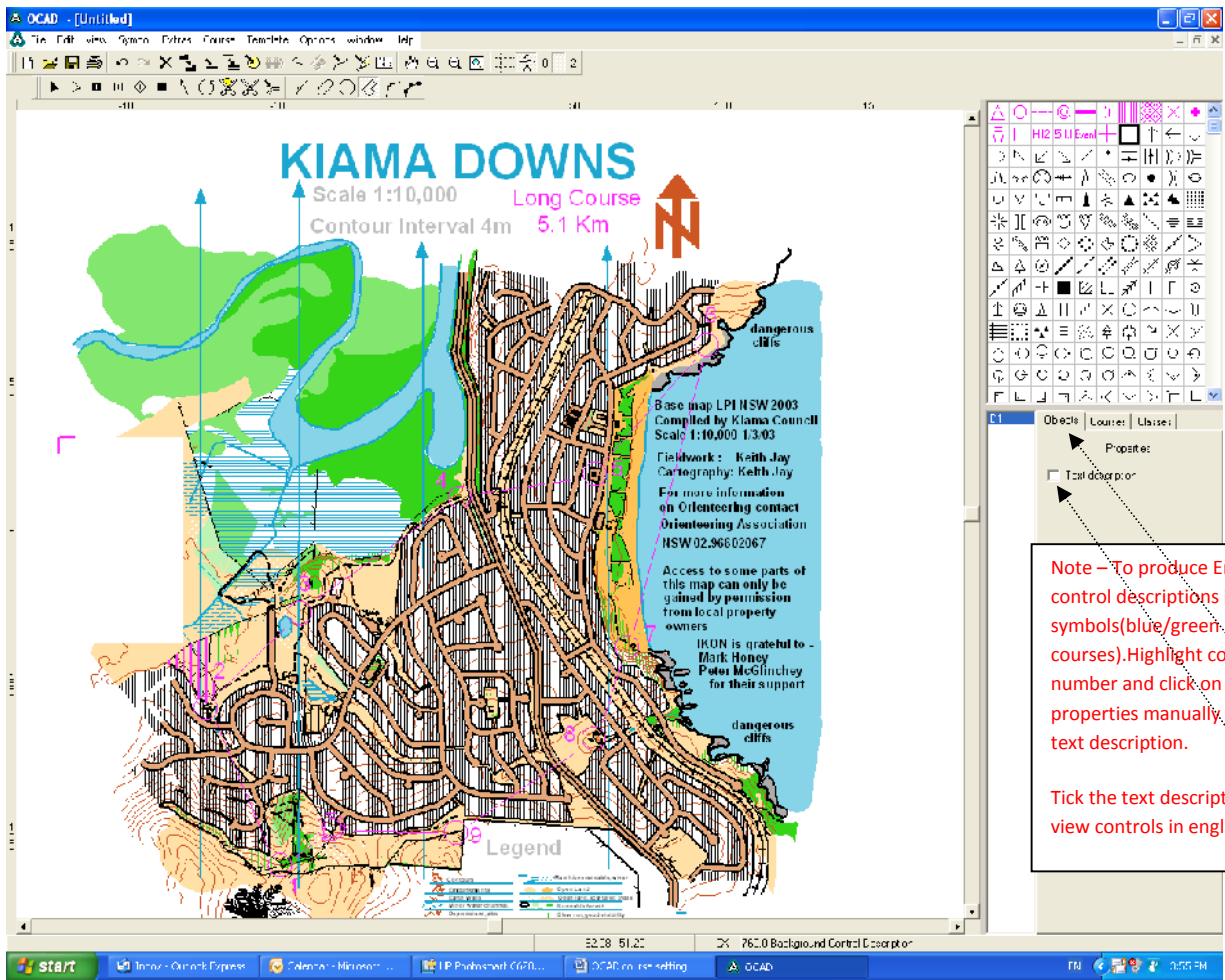


Select white box symbol and select any drawing mode symbol to locate a white out space for the control descriptions to appear if required



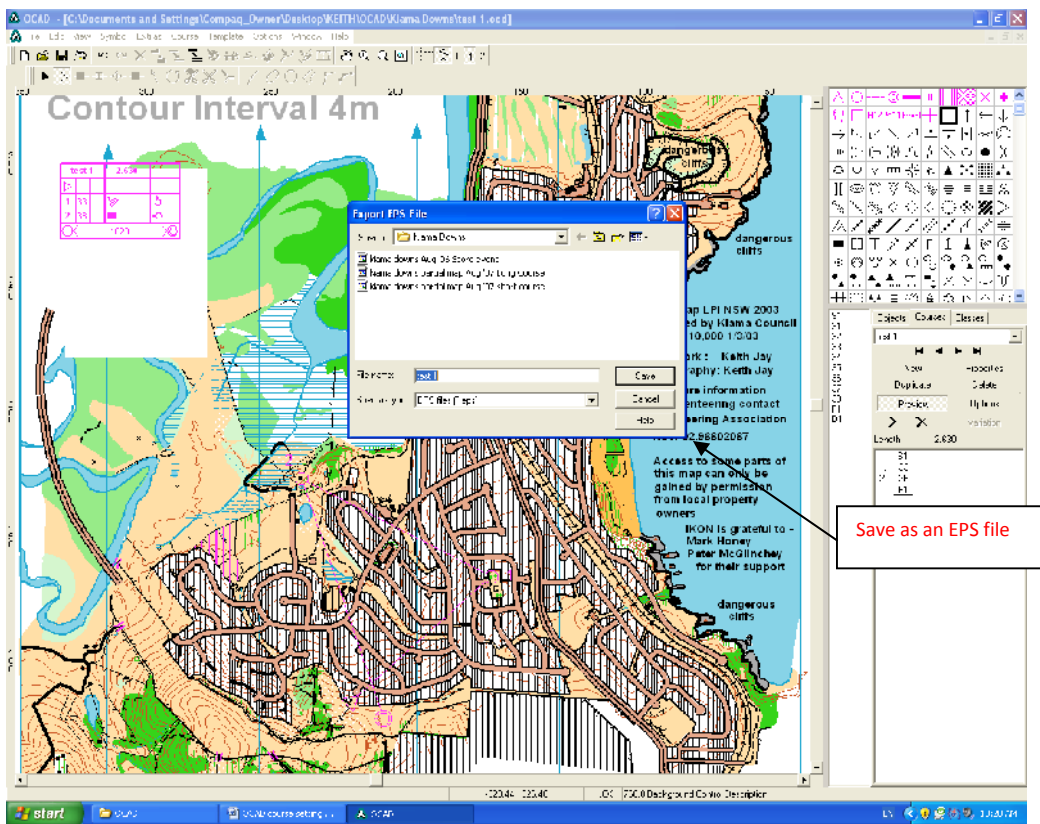
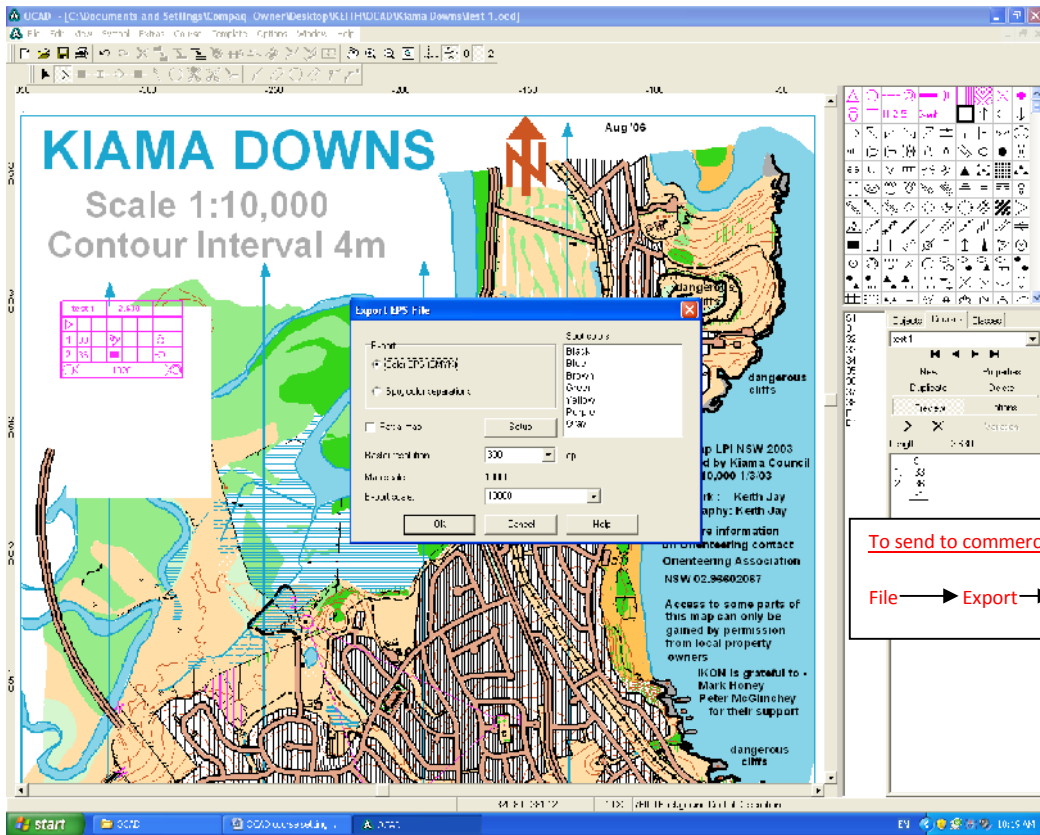
Click on 'courses' then 'preview' to show controls for test 1 on front of the map





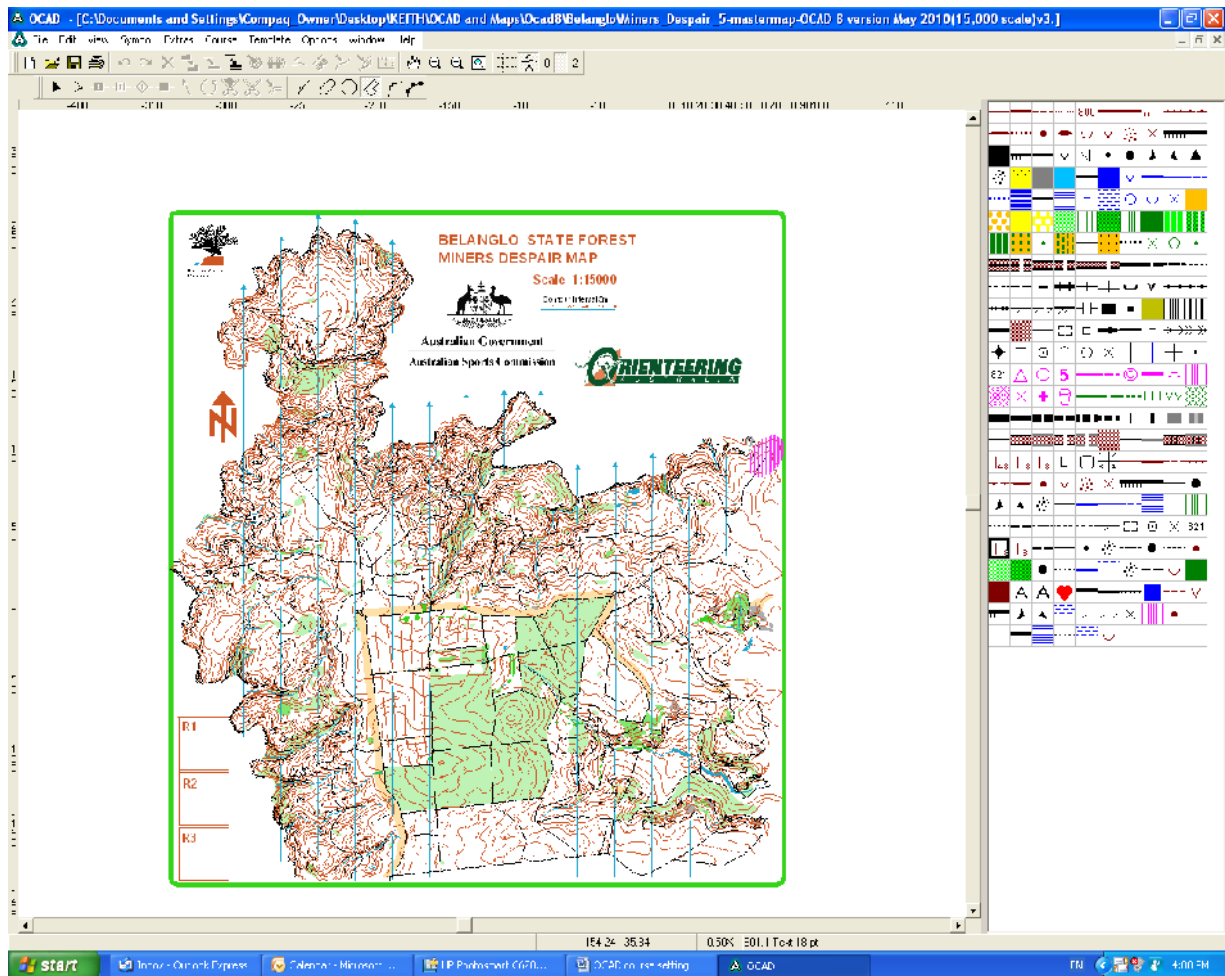
Note – To produce English control descriptions instead of symbols (blue/green courses). Highlight control number and click on objects. In properties manually type the text description.

Tick the text description box to view controls in english



Appendix 1

Inserting JPEG templates eg sponsors logos



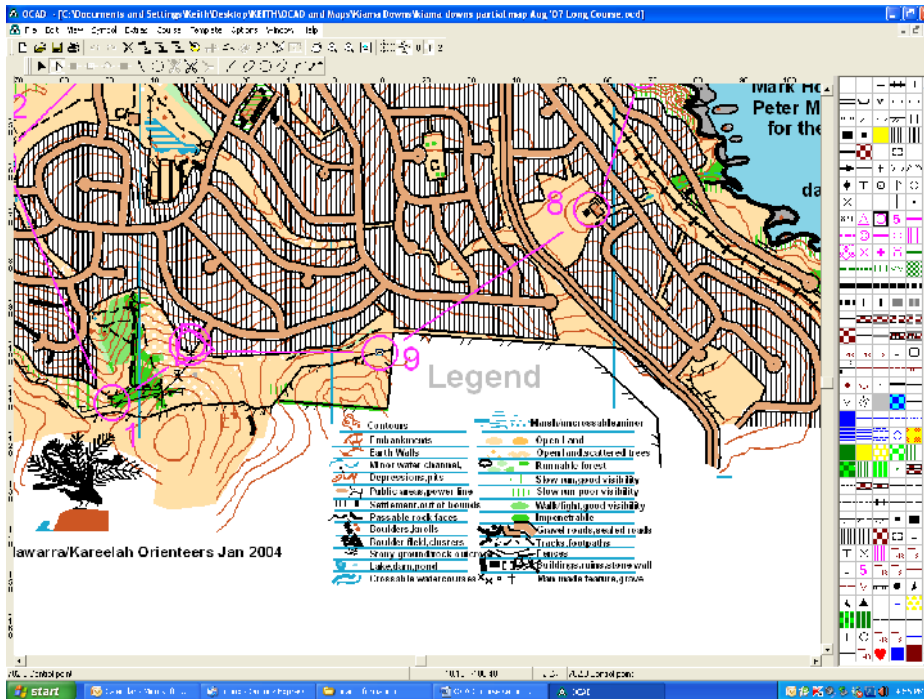
Insert logos by clicking on template (menu). Open the JPEG file

To move or relocate logos Click on template Adjust Pick a point on the logo to click on and pick a point on the map to click on and the logo will move to the new position.

Tip – edit JPEG file in windows picture manager. Crop first to reduce the size of the border, otherwise it will cover parts of the map and or other logos. Also choose say 25% in zoom before importing this template, otherwise it will be too large.

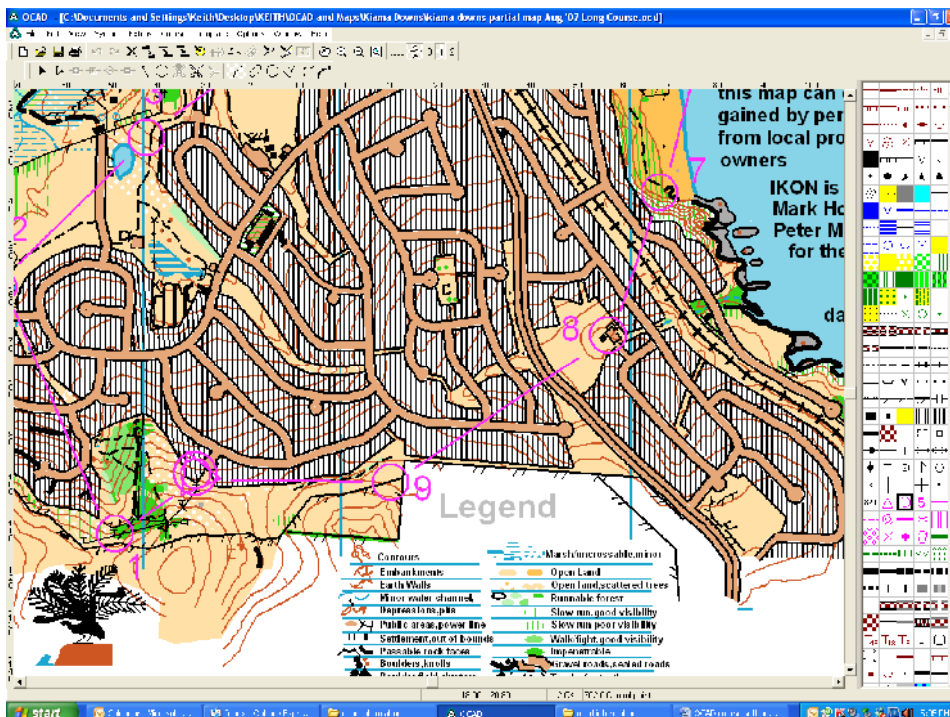
Appendix 2

Cutting Control Circles to see map details that may be obscured

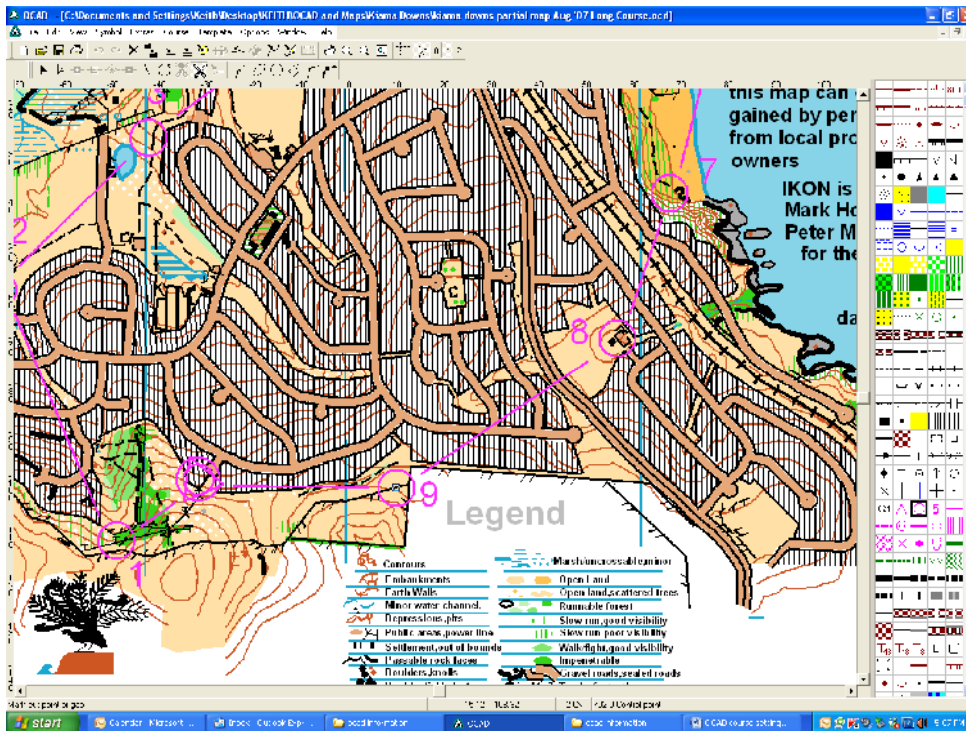


1. Click on control symbol in symbol box right hand side indicated

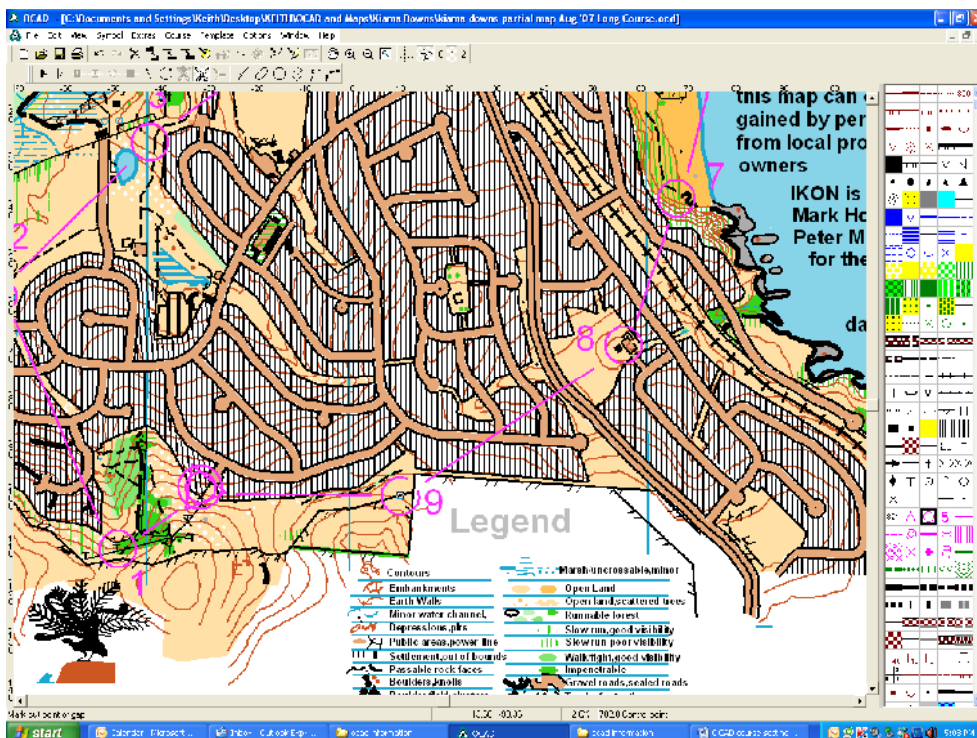
2. Click on control circle to be cut



3. Click on curved mode symbol in tool box

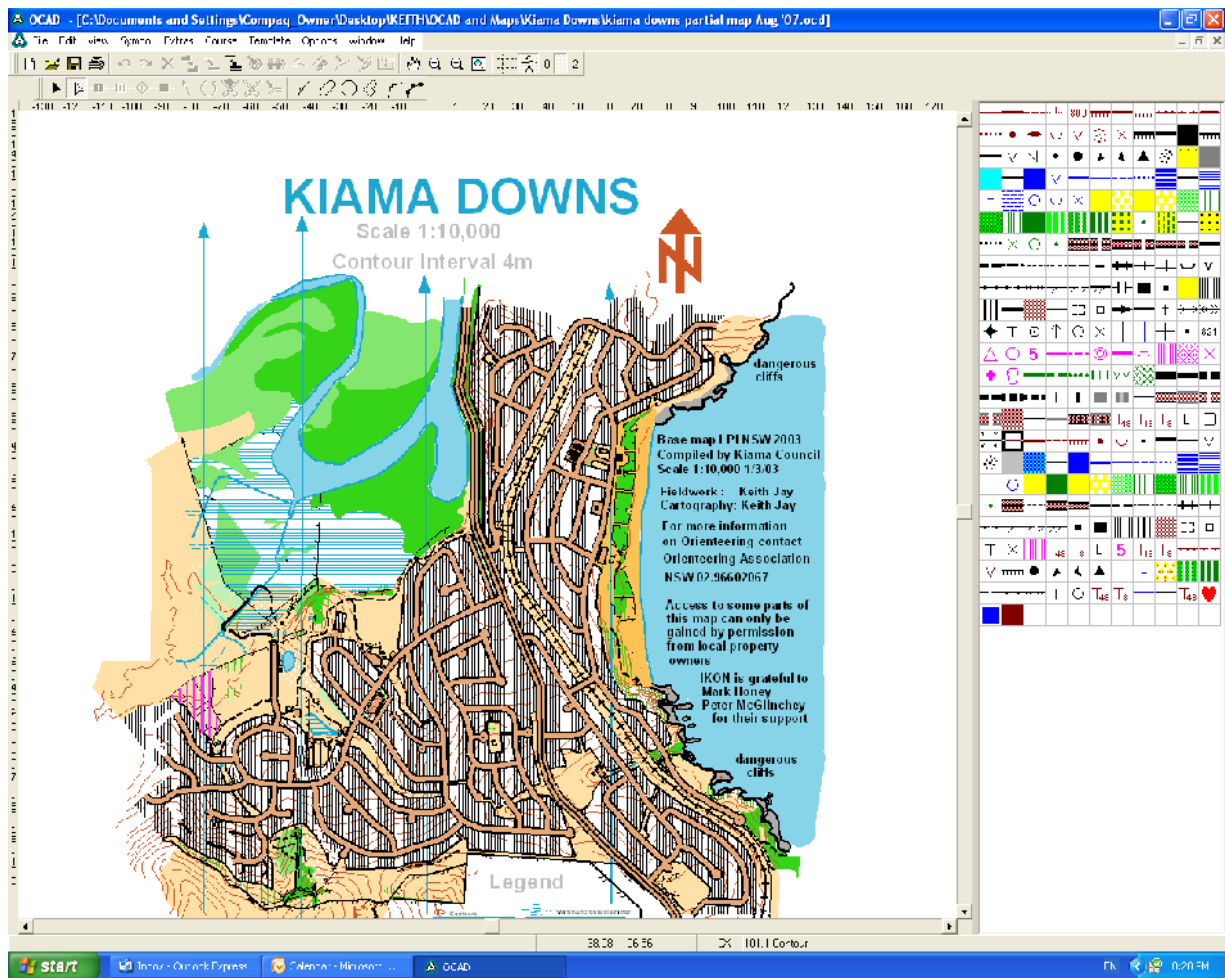


4. Click on siccors in tool box



5. Click on section of circle to be removed and while holding down left mouse button redraw around the circle and release mouse button

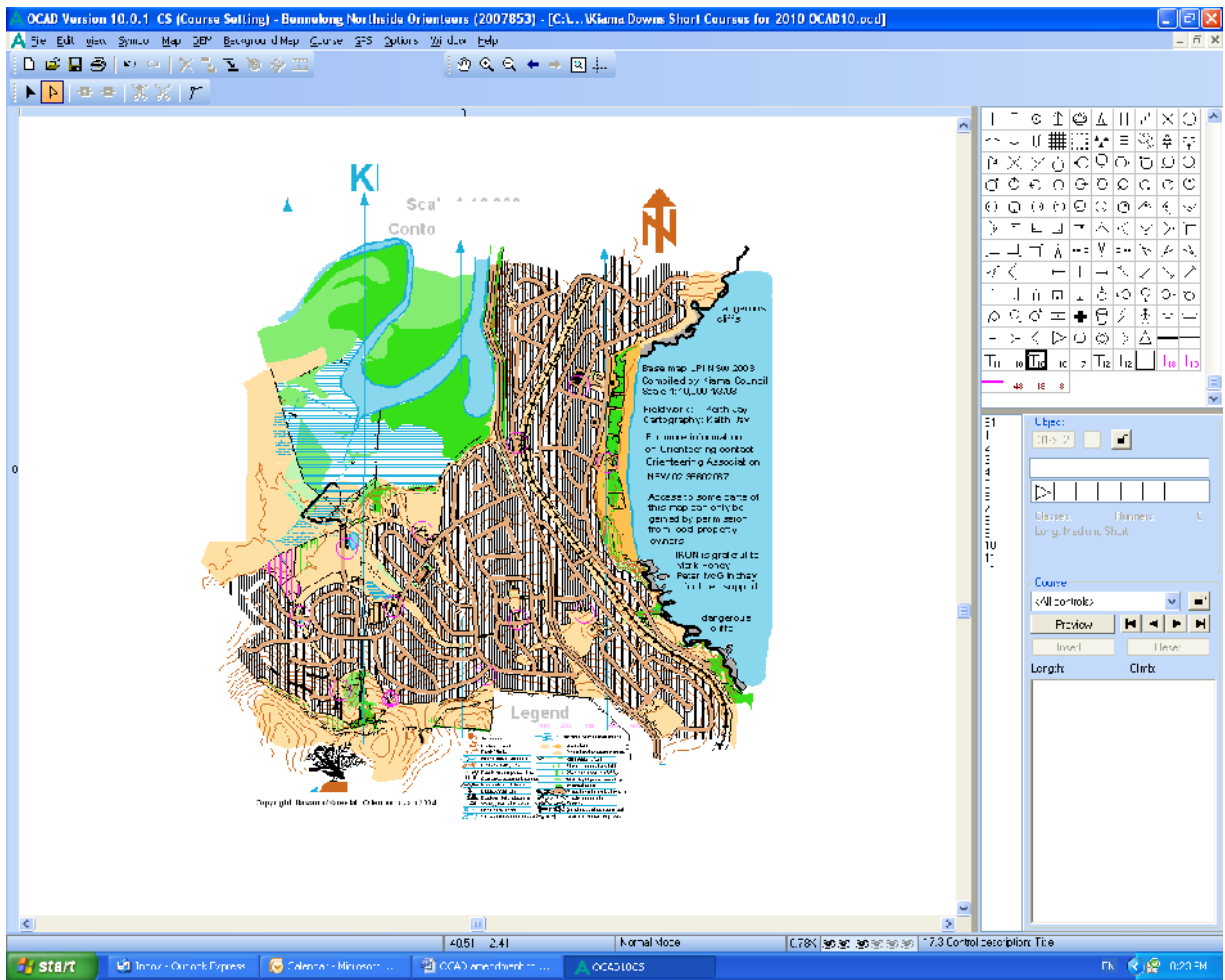
OCAD10 Amendment 1



OCAD8 above does not sometimes transfer to OCAD10 with the Text as per below.

May have to write text separately in OCAD10 for title etc.

Have found however that if you open another program and go back in to OCAD10 it sometimes rights itself however



OCAD10 of the map from OCAD8 from above